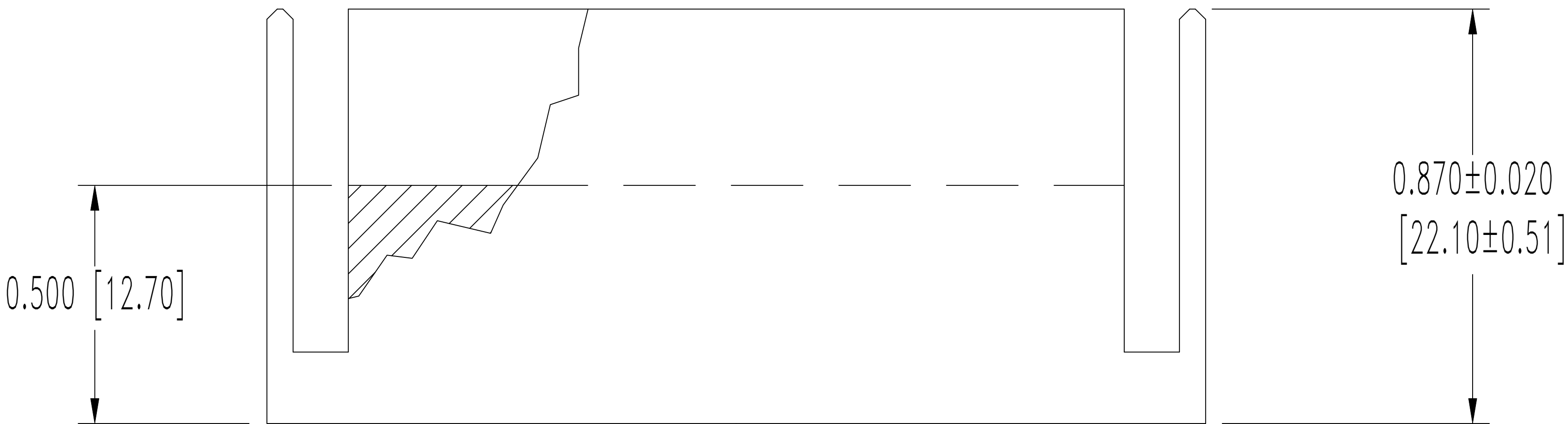
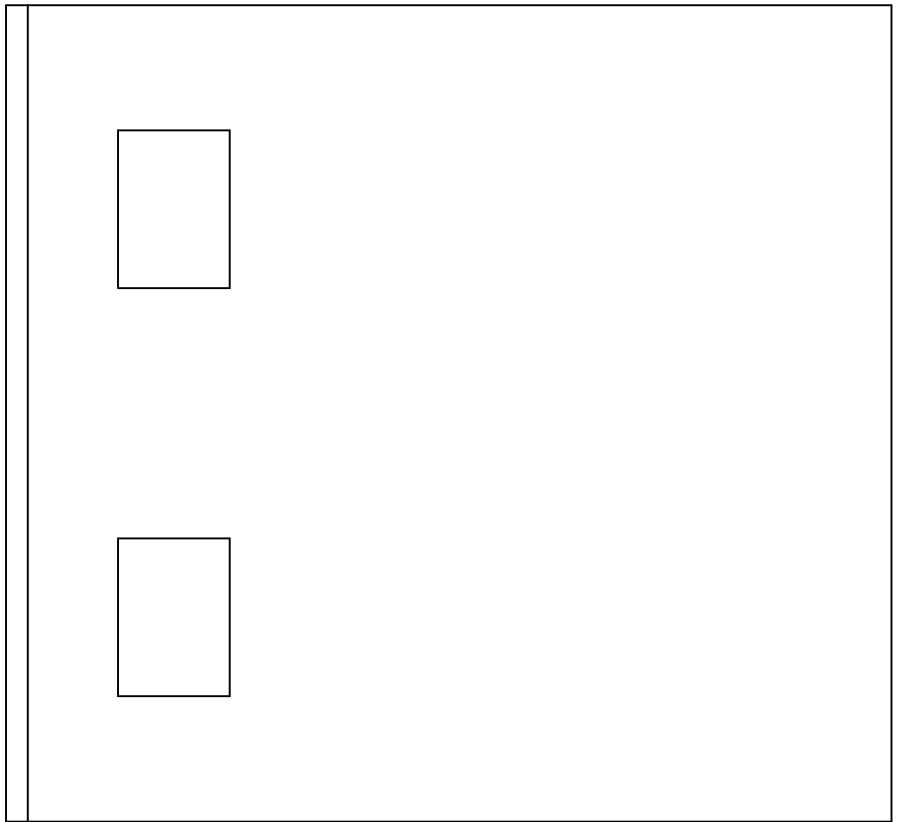
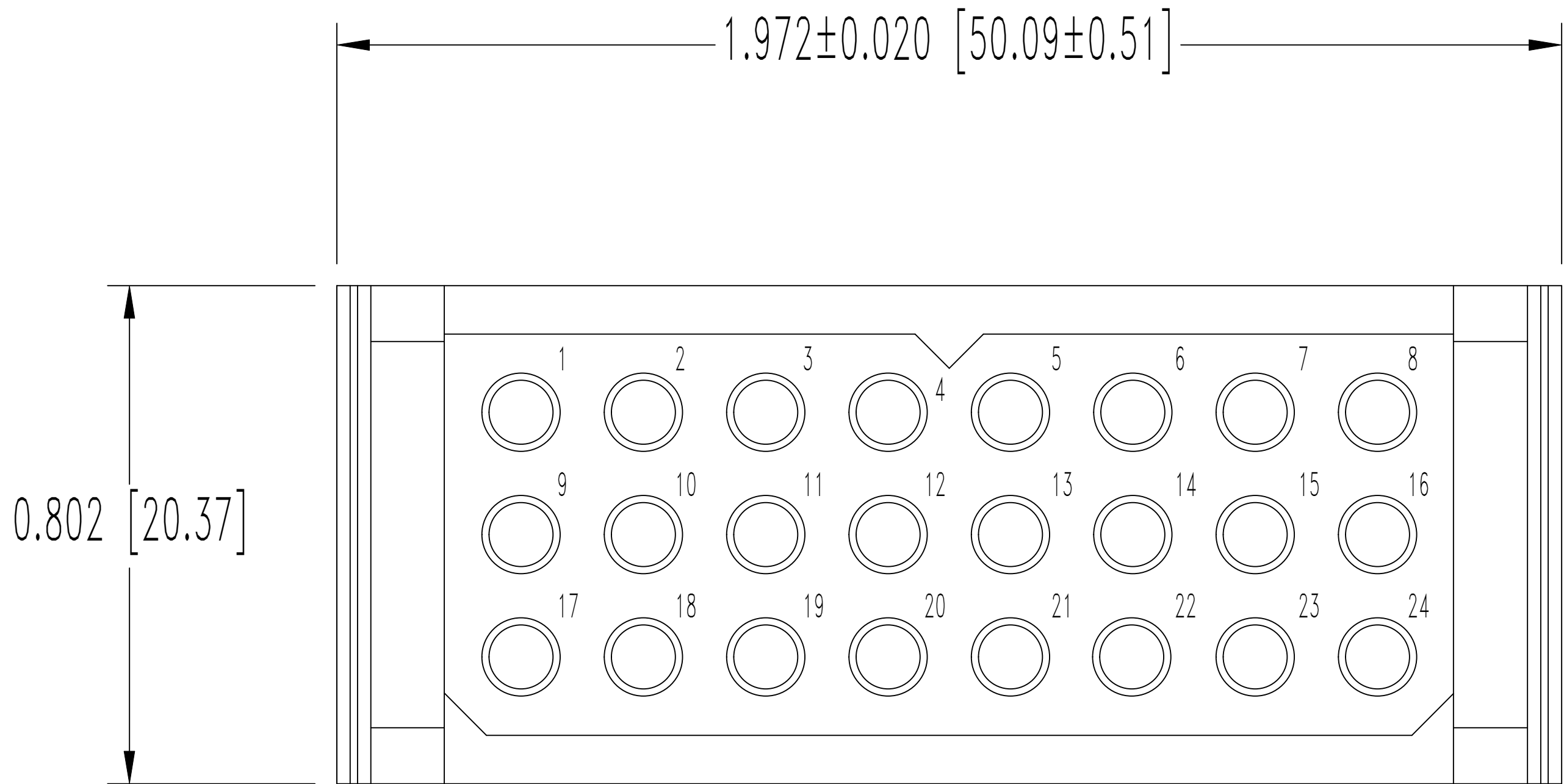


SK3472

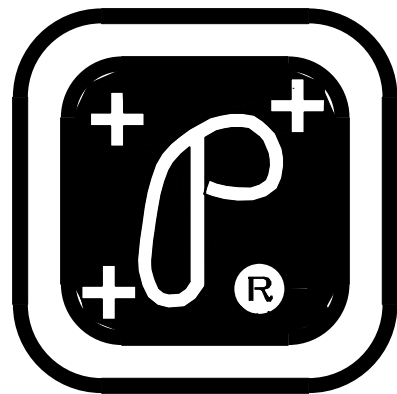
THIS DRAWING CONTAINS INFORMATION PROPRIETARY TO POSITRONIC AND ITS SUBSIDIARIES. POSITRONIC BELIEVES THE DATA ON THIS DRAWING TO BE RELIABLE. SINCE THE TECHNICAL INFORMATION IS GIVEN FREE OF CHARGE, THE USER EMPLOYS SUCH INFORMATION AT HIS OWN DISCRETION AND RISK. POSITRONIC ASSUMES NO RESPONSIBILITY FOR RESULTS OBTAINED OR DAMAGES INCURRED FROM USE OF SUCH INFORMATION IN WHOLE OR IN PART.

DATE	REV	REVISION RECORD		APP	DR	CK
11-3 00	NC	ECO	16974	RCW	YK	TK
8-26 04	A	ECO	22918	RCW	YK	TK
12-3 04	B	ECO	23358		YK	

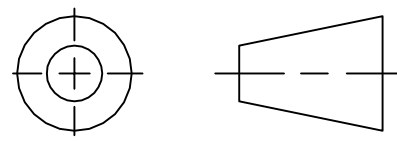


NOTES:

- MATERIALS AND FINISHES:
INSULATOR: GLASS FILLED POLYESTER, UL 94V-0, COLOR BLUE.
- ELECTRICAL CHARACTERISTICS:
INSULATOR RESISTANCE: 5 G OHMS PER IEC 512-2, TEST 3a, METHOD A.
WORKING VOLTAGE: 600 VAC.
- TEMPERATURE RANGE: -55°C TO +125°C.
- DIMENSIONS ARE IN INCHES [MILLIMETERS].



POSITRONIC INDUSTRIES INC.
SPRINGFIELD, MISSOURI 65801



DECIMAL TOL.
± 0.015 [0.38]

PCS SERIES

TITLE

PLC24M0000

DATE

11-3-00

ANGULAR TOL.
± 5°

SCALE

N.T.S.

DRAWN BY Y. KELLEYBREW

APPROVED BY RCW

DRAWING NUMBER

SK3472

REV.

B